

2X6 PRESSURE TREATED
BOTTOM PLATE

CONC. STEMWALL PER PLAN
W/ (3)-#4 CONT. HORIZ REBARS
W/ #4 VERT. REBAR @ 24" O/C

1/2" DIA X 10" ANCHOR BOLTS
W/ 2"X2"X3/16" WASHERS
@ MAX. 6FT O/C SPACING

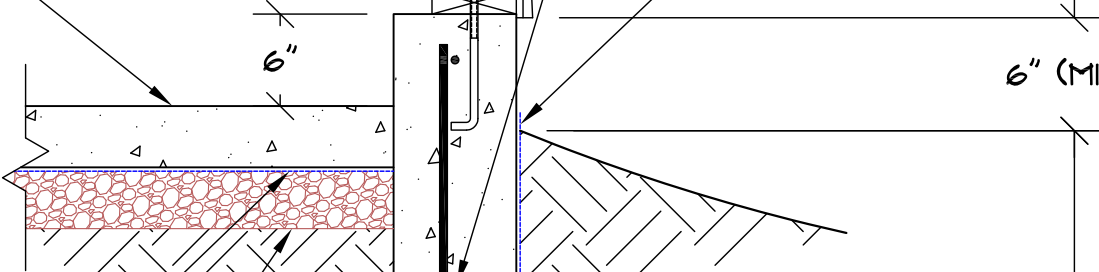
WATERPROOFING
TO GRADE

4" CONCRETE SLAB
REINF. AS REQUIRED

6"

6" (MIN.)

95% COMPACTED
BACK FILL



COMPACTED
BACK FILL

1'-6" (MIN.)

6 MIL POLYETHYLENE
VAPOR BARRIER

4" GRAVEL BASE
AS REQUIRED

10"

#4 VERT. DOWELS
@ 24" O/C

4" DIA RIGID PERF. PVC FOOTING
DRAIN PIPE
MIN. 2% SLOPE TO DAYLIGHT

CONC. FTG PER PLAN
W/ (2)-#4 CONT. HORIZ
REBARS

8"

1'-8"

3/4" WASHED DRAIN GRAVEL
W/ FILTER FABRIC