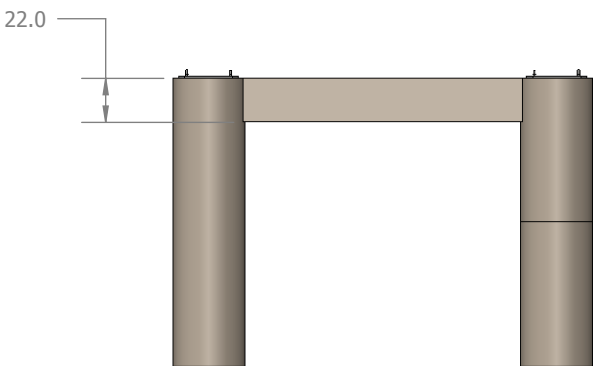
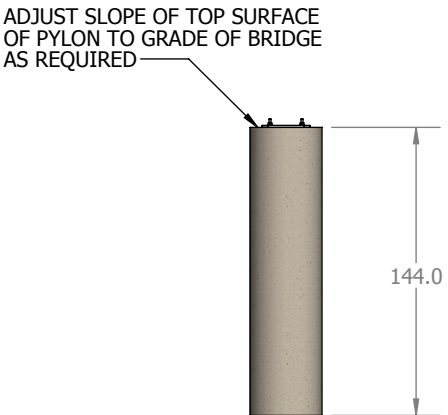
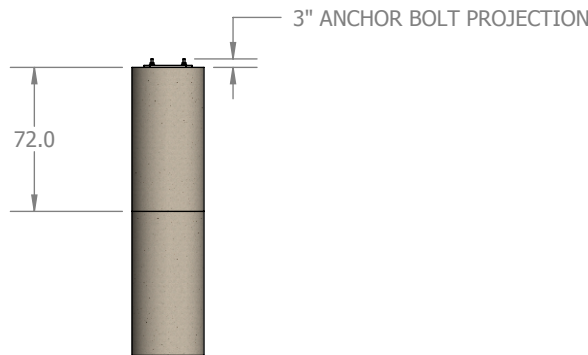
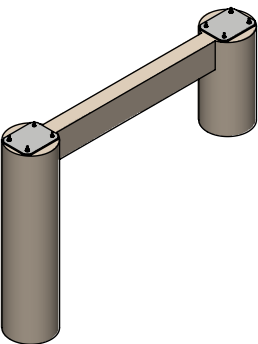
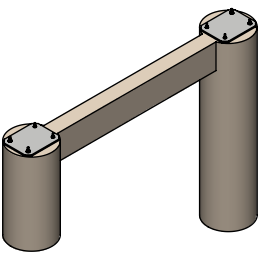
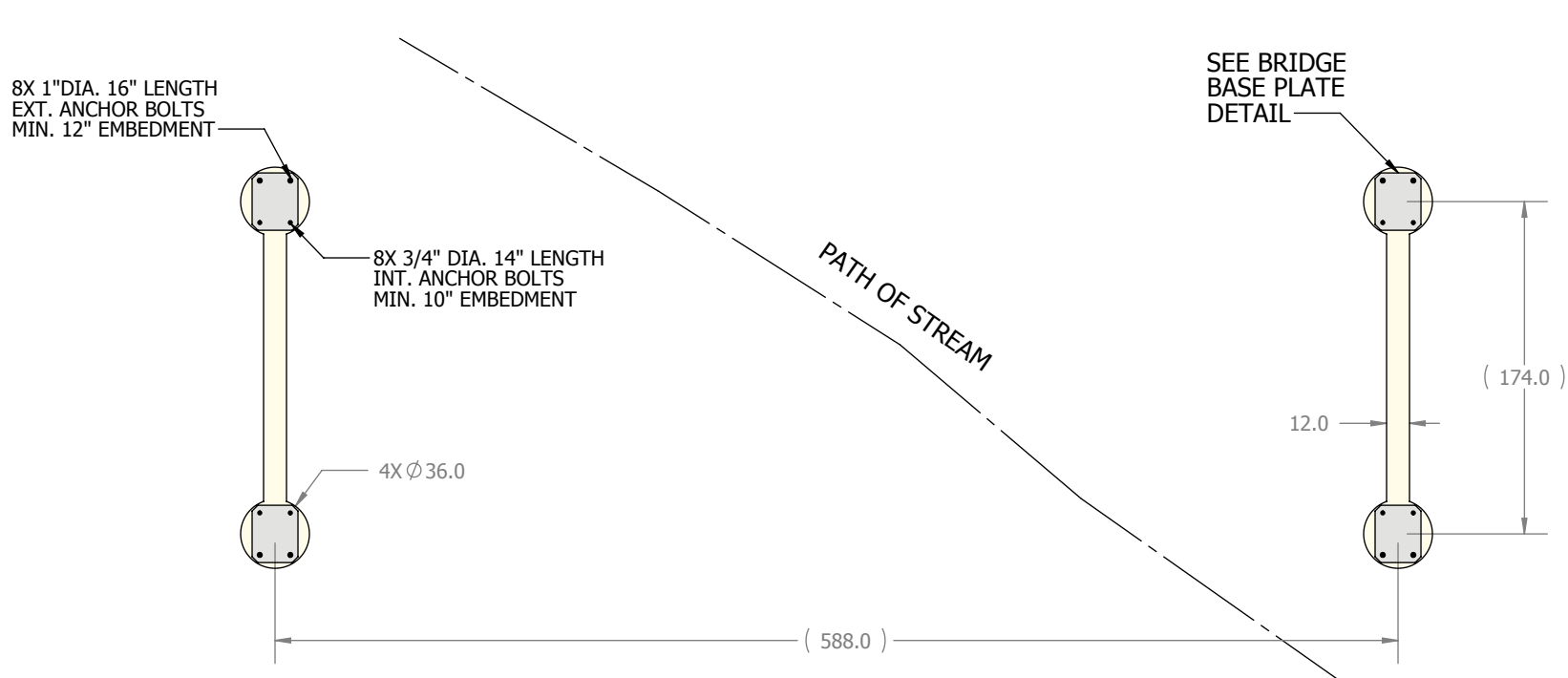




52 X 14.5 BRIDGE - ABUTMENTS



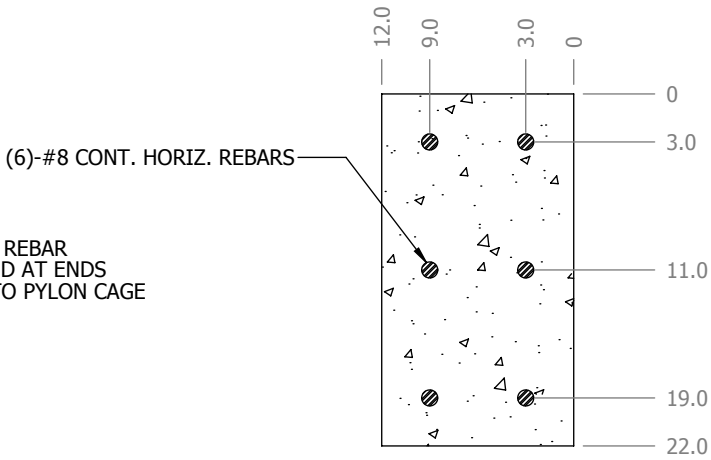
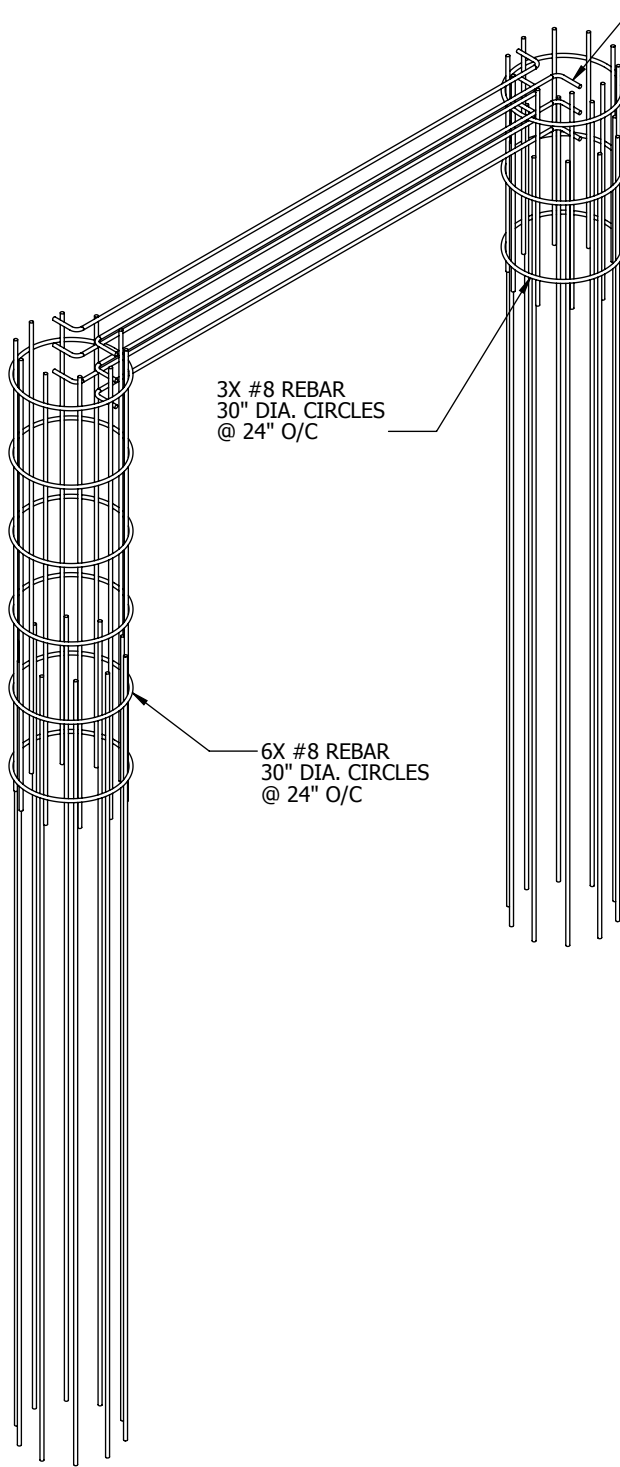
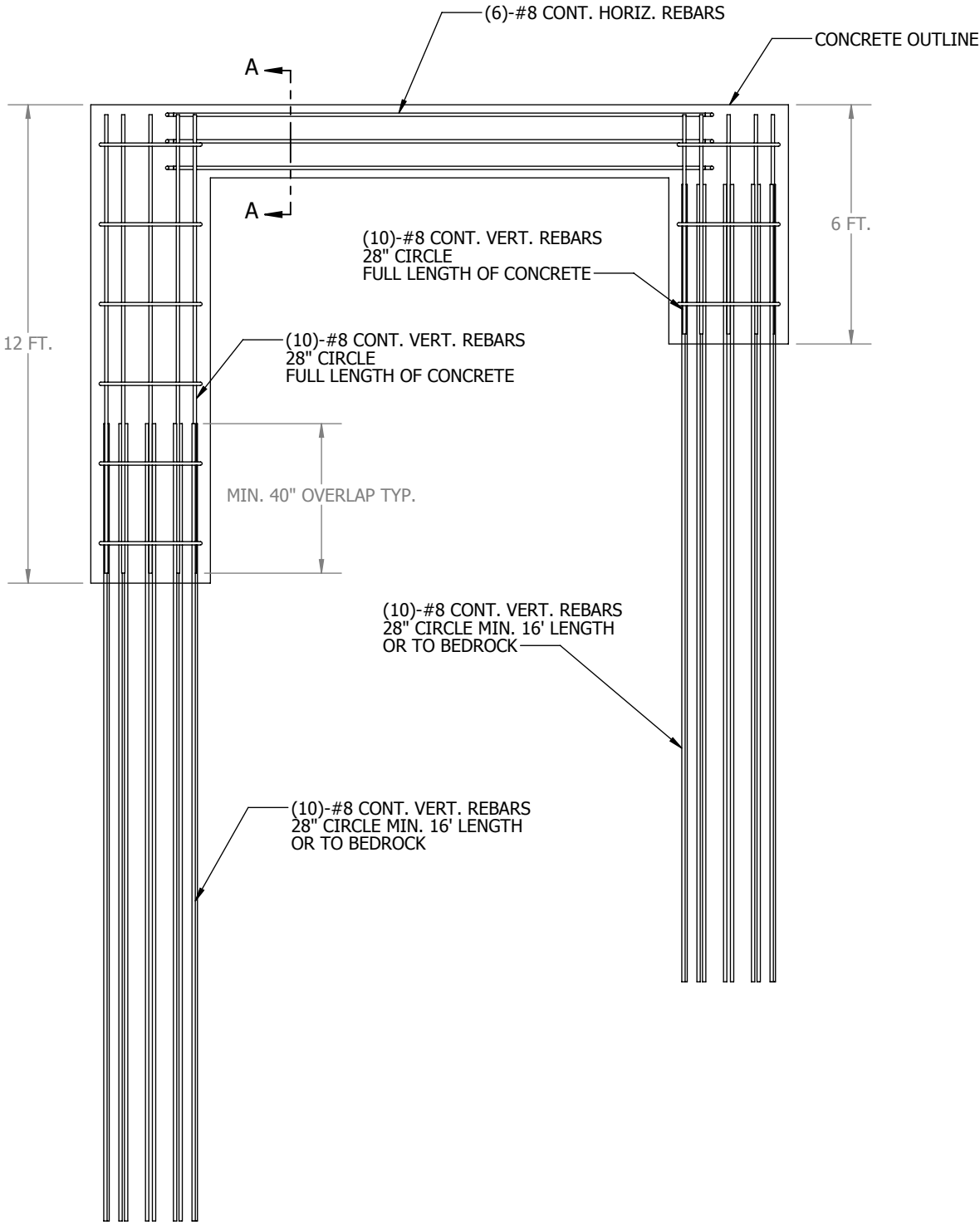
GENERAL NOTES:

1. CONCRETE MINIMUM COMP. STRENGTH 4000 PSI
2. BRIDGE BASE PLATE MATERIAL: A36 STEEL OR EQUIVALENT
3. ALLOW MIN. 14 DAY CURE TIME BEFORE BRIDGE PLACEMENT
4. BACKFILL AROUND PYLONS WITH GRAVEL AND COMPACT TO MATCH ROAD SURFACE
5. SHORE UP EXPOSED PYLONS WITH 12" DIA. RIPRAP AND GEOTEXTILE FABRIC
6. BRIDGE PYLONS AND CROSSMEMBER SHALL BE ONE MONOLITHIC POUR

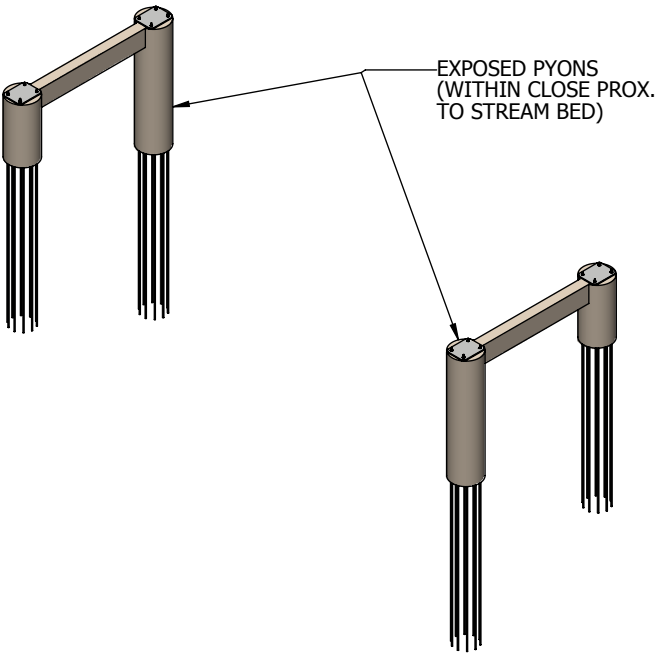
NOTE: REBAR NOT SHOWN FOR CLARITY

<div></div> <div><b>Quinault Engineering</b> 14 WEST QUINAULT ST. TAHOLAH, WA 98587 ph (360) 276-8215 fax (360) 276-4191</div>	WEIGHT:  LBS	DIM. UNITS INCHES TOL. GROUP COARSE		DIMENSION UNITS UNLESS OTHERWISE NOTED	
		X. ±	0.250	<div>500</div> <div></div> <div>THIRD ANGLE PROJECTION</div>	
		X.X ±	0.125		
		X.XX ±	0.060		
X.XXX ±	0.015	X°±5 1/X ±1/8			
ALL INFORMATION CONTAINED IN THIS DRAWING IS PROPRIETARY TO, AND SHALL BE USED OR DISTRIBUTED ONLY WITH THE WRITTEN PERMISSION OF, QUINAULT INDIAN NATION. PRINTED COPIES OF THIS DOCUMENT ARE FOR REFERENCE ONLY.		BREAK ALL EDGES .005-.035 MAX FILLET RADIUS 0.035			
BRIDGES		USED ON DWG: -			
52 x 14.5 Bridge Abutment		MODEL FILENAME 52X146ABUTMENT		MODEL REV	DWG FILENAME 52X146ABUTMENT
		ENGR Engineer		1:96	SHEET B
		DRAWING NO. 52X146ABUTMENT		SHEET 1 OF 3	
		A		REVISION LET CHECK-IN #	
		MFG IGNORE CHECK IN #			

52 X 14.5 BRIDGE - ABUTMENTS REBAR





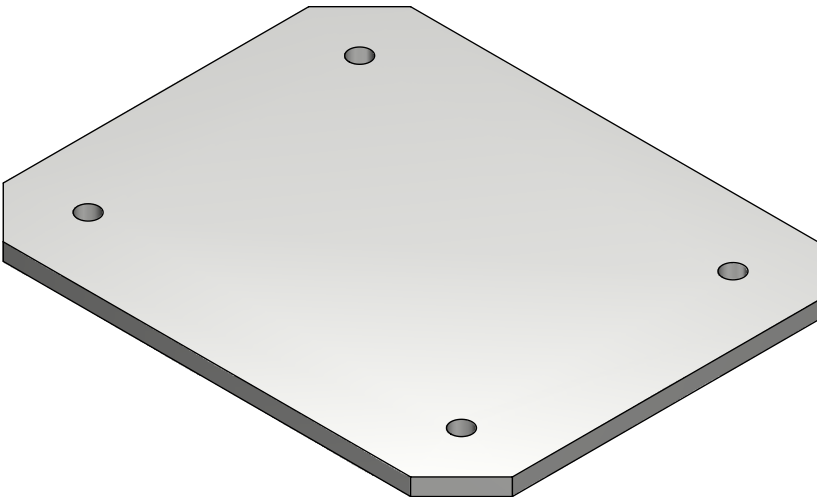
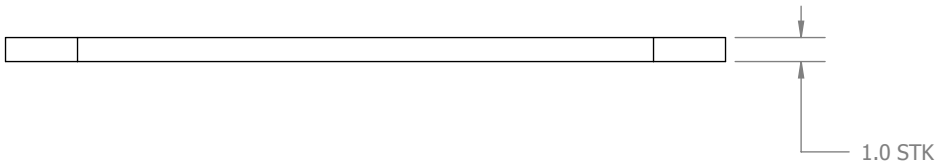
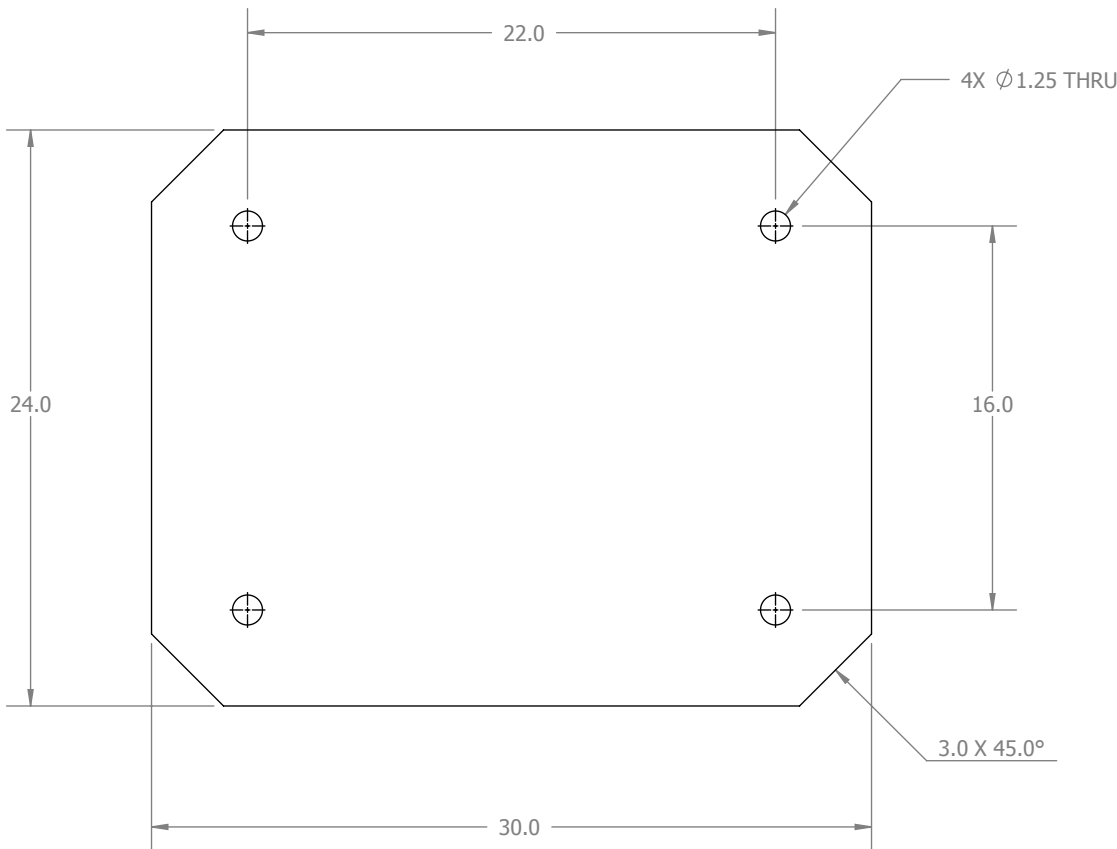
SECTION A-A  
SCALE 1 : 12



REBAR NOTES:

1. ALL REBAR #8 UNLESS OTHERWISE NOTED
2. REBAR SHALL BE PLACED A MIN. OF 3" FROM CONCRETE EDGE OR FACE
3. ALL REBAR GRADE 60



<div></div> <div><b>Quinault Engineering</b> 14 WEST QUINAULT ST. TAHOLAH, WA 98587 ph (360) 276-8215 fax (360) 276-4191</div>	<div><b>WEIGHT:</b> 1938.30 LBS</div>	<div>DIM. UNITS INCHES</div> <div>TOL GROUP COARSE</div>		<div>◀DIMENSION UNITS UNLESS OTHERWISE NOTED</div> <div>500/ </div> <div>THIRD ANGLE PROJECTION</div>	
		<div>X. ± 0.250 X.X ± 0.125 X.XXX ± 0.060 X.XXXX ± 0.015</div> <div>X°±5 1/X ±1/8</div>		<div>BREAK ALL EDGES .005-.035 MAX FILLET RADIUS 0.035</div>	
<div>ALL INFORMATION CONTAINED IN THIS DRAWING IS PROPRIETARY TO, AND SHALL BE USED OR DISTRIBUTED ONLY WITH THE WRITTEN PERMISSION OF, QUINAULT INDIAN NATION. PRINTED COPIES OF THIS DOCUMENT ARE FOR REFERENCE ONLY.</div>					
<div>BRIDGES</div>					
<div>52X146 Bridge Abutment Rebar</div>					
<div>MODEL FILENAME 52X146ABUTMENT</div>		<div>MODEL REV</div>		<div>DWG FILENAME 52X146ABUTMENT</div>	
<div>DRAWN NPW</div>		<div>ENGINEER Engineer</div>		<div>SHEET 8</div>	<div>SHEET 2 OF 3</div>
<div>DRAWING NO. 52X146ABUTMENT</div>				<div>REVISION LET CHECK IN # A</div>	
				<div>MFG IGNORE CHECK IN #</div>	



BASE PLATE NOTES:

1. MATERIAL: A36 STEEL OR EQUIVALENT
2. PLASMA CUT PROFILE AND HOLES, BREAK ALL SHARP EDGES
3. QUANTITY: 4
4. SECURE BASE PLATE TO ABUTMENTS WITH ANCHOR BOLTS, HEX NUTS & WASHERS
5. COAT: SAME AS STEEL BRIDGE
6. WELD BRIDGE MAIN BEAMS TO BASE PLATES
7. SHIM BRIDGE ON BASE PLATES AS REQUIRED, WELD SHIMS TO BASEPLATE

WELD AS PER BEST  
SHOP PRACTICE

<div></div> <div><b>Quinault Engineering</b> 14 WEST QUINAULT ST, TAHOLAH, WA 98587 ph (360) 276-8215 fax (360) 276-4191</div>	<div><b>WEIGHT:</b> 196.44 LBS</div>	<div>DIM. UNITS INCHES</div> <div>TOL. GROUP COARSE</div>		<div>DIMENSION UNITS UNLESS OTHERWISE NOTED</div> <div>500/—</div> <div>THIRD ANGLE PROJECTION</div>	
		<div>X. ± 0.250 X.X ± 0.125 X.XX ± 0.060 X.XXX ± 0.015</div> <div>X°±5 1/X ±1/8</div>		<div>BREAK ALL EDGES .005-.035 MAX FILLET RADIUS 0.035</div>	
<div>ALL INFORMATION CONTAINED IN THIS DRAWING IS PROPRIETARY TO, AND SHALL BE USED OR DISTRIBUTED ONLY WITH THE WRITTEN PERMISSION OF, QUINAULT INDIAN NATION. PRINTED COPIES OF THIS DOCUMENT ARE FOR REFERENCE ONLY.</div>					
<div>BRIDGES</div>		<div>USED ON DWG: -</div>			
<div>52x14.5 Bridge Base Plate</div>		<div>MODEL FILENAME 52X146ABUTMENT</div>		<div>MODEL REV</div>	
		<div>DRAWN NPW</div>		<div>DRAW FILENAME 52X146ABUTMENT</div>	
		<div>CHECKED Engineer</div>		<div>SHEET B</div>	
		<div>1:8</div>		<div>SHEET 3 OF 3</div>	
		<div>DRAWING NO. 52X146ABUTMENT</div>		<div>REVISION LET CHECK-IN # A</div>	
				<div>MFG IGNORE CHECK IN #</div>	