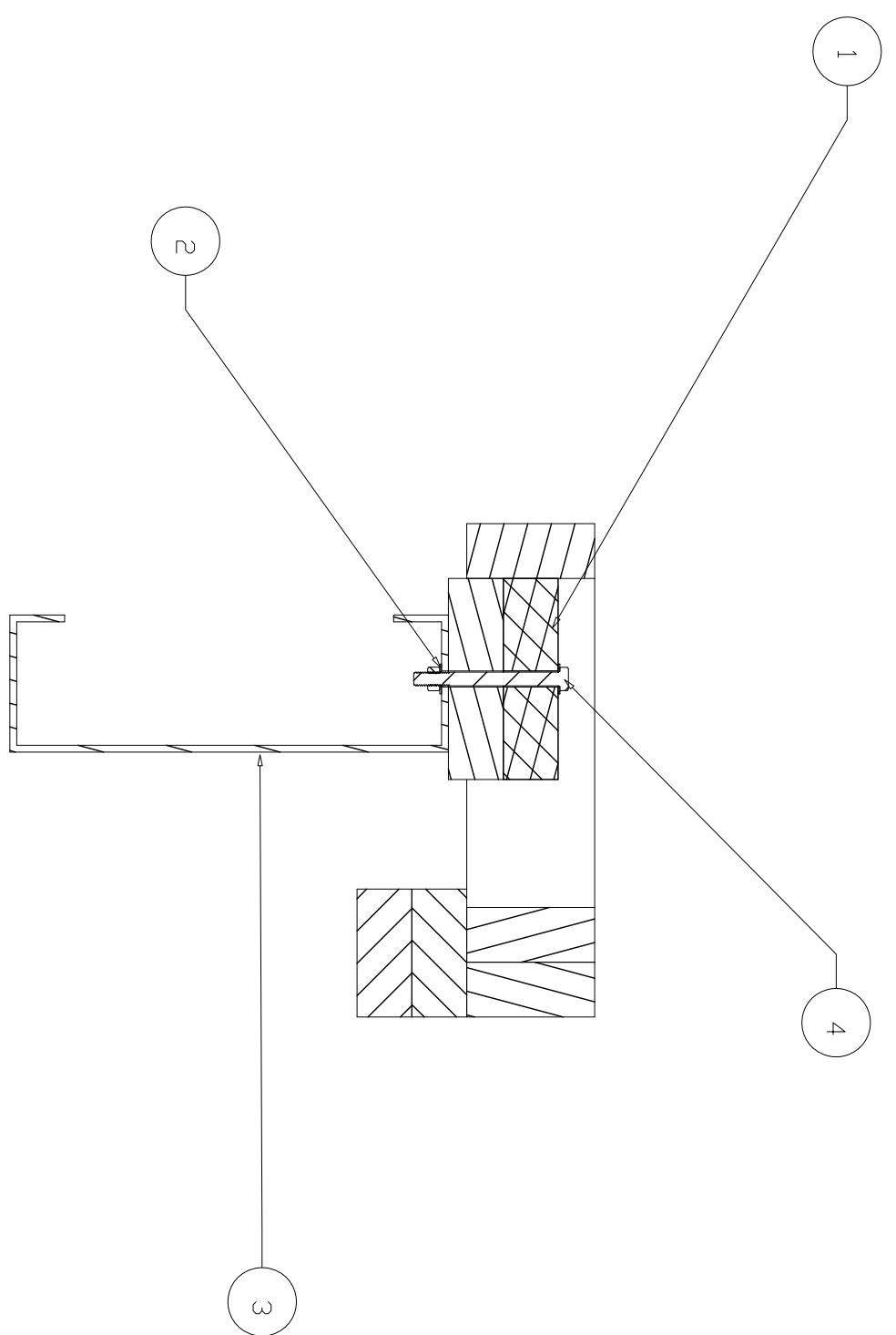
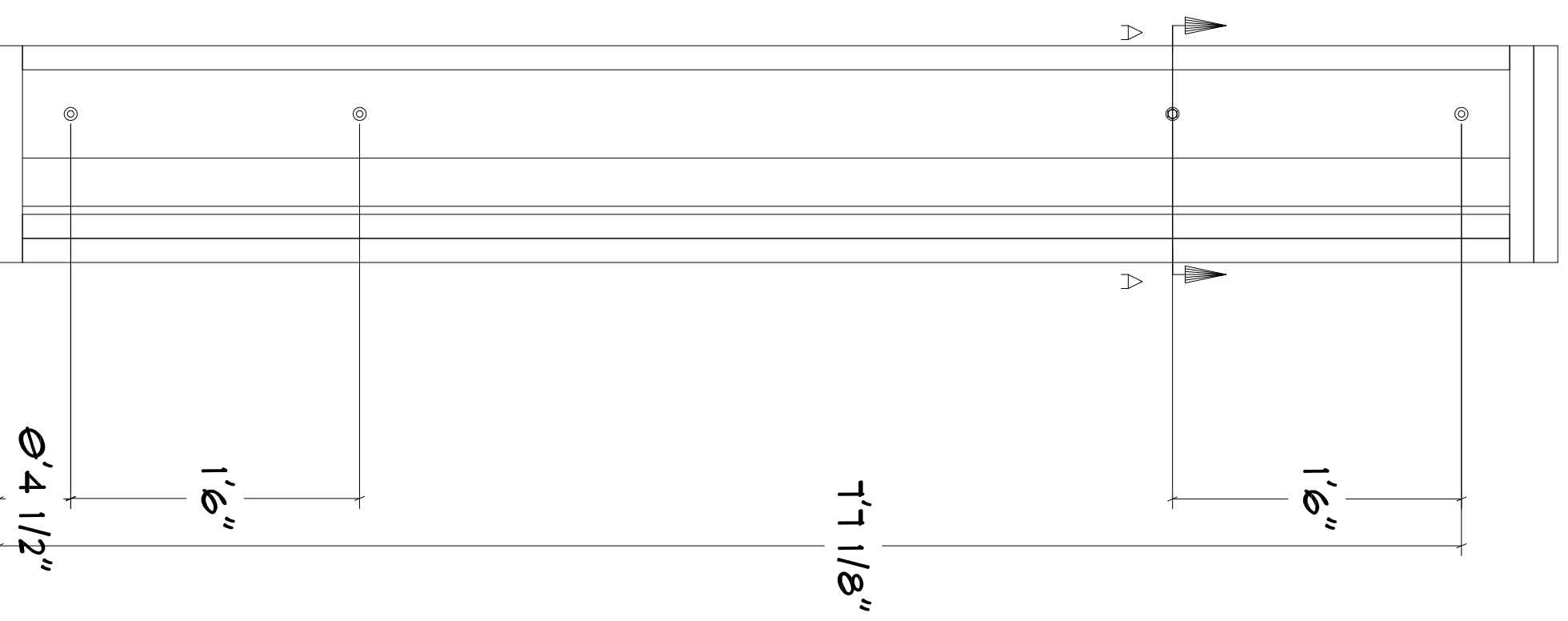


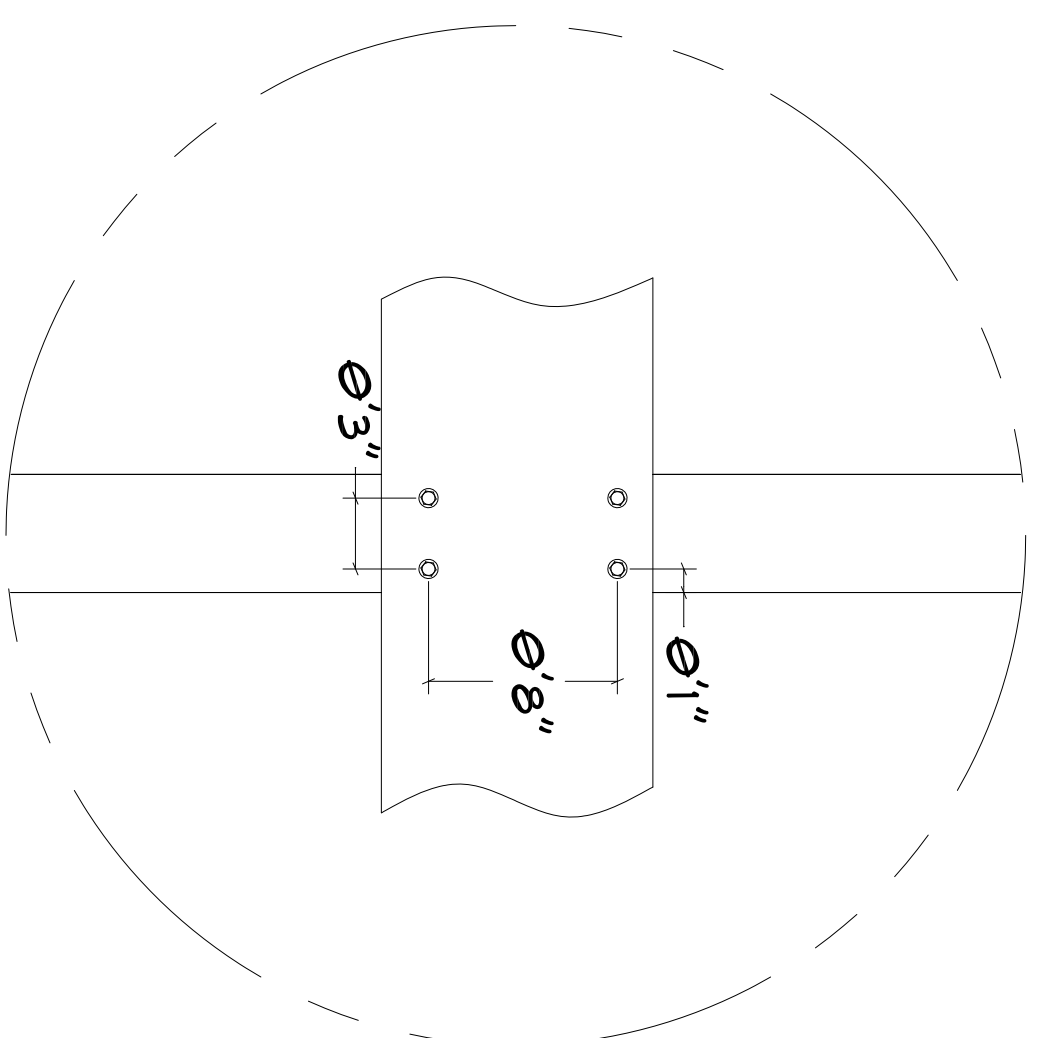
QUANTITY	PART NUMBER	PART NAME
16		3/8" - 16 4" ULTRA-COATED HEX BOLT
32		3/8" ULTRA-COATED WASHER
16	LOWES 95991	3/8" - 16 ULTRA-COATED NUT
2		SIMPSON STRONG TIE DOUBLE SHEAR HANGER
88	LOWES 108806	SIMPSON STRONG TIE DOUBLE SHEAR HANGER



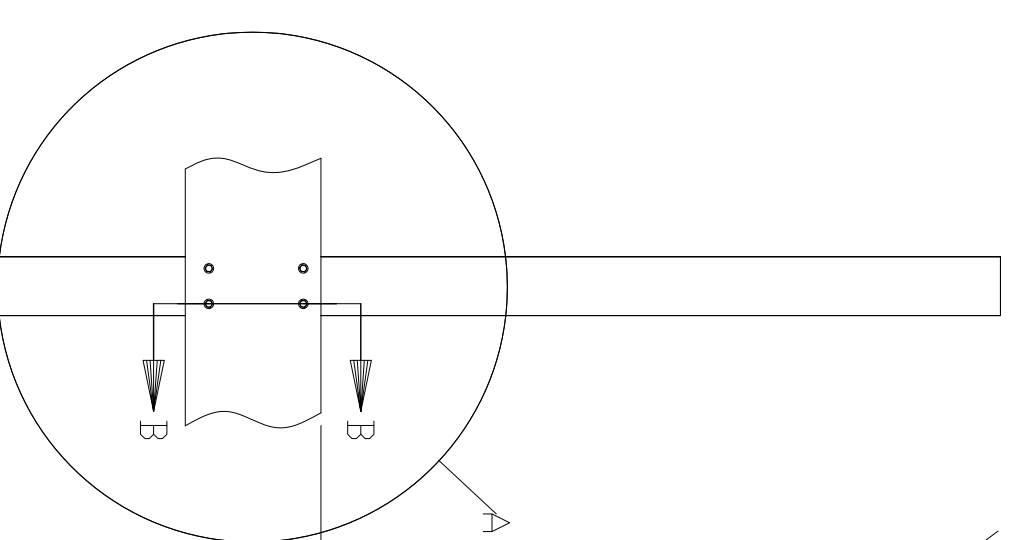
Section A-A



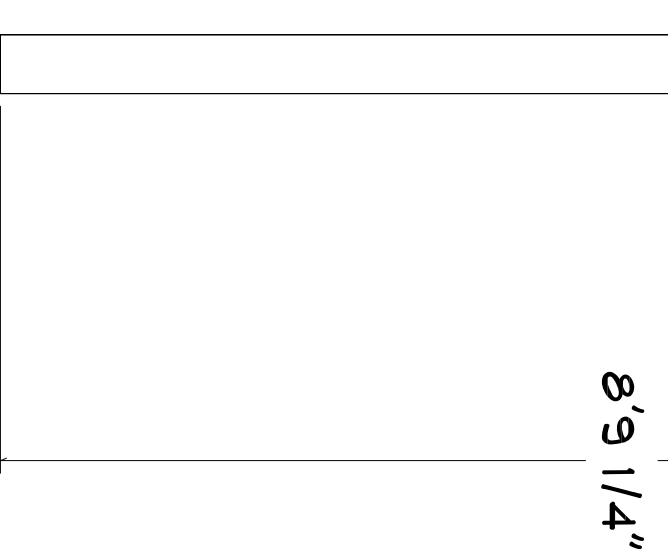
- NOTES:
1. FRAME STUDDED WALL AND PLACE 2X6 WITH NO GAP TO STEEL COLUMN AS SHOWN IN SECTION A-A
 2. DRILL HOLES THRU ALL PARTS IN PLACE
 3. DRILL 5/16" HOLE FOR 3/8" BOLT IN 4 PLCS



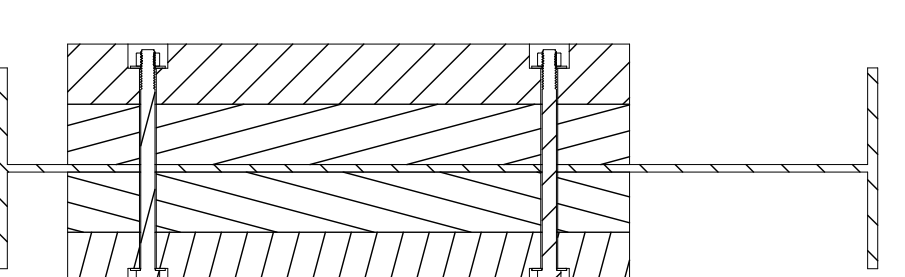
Detail A



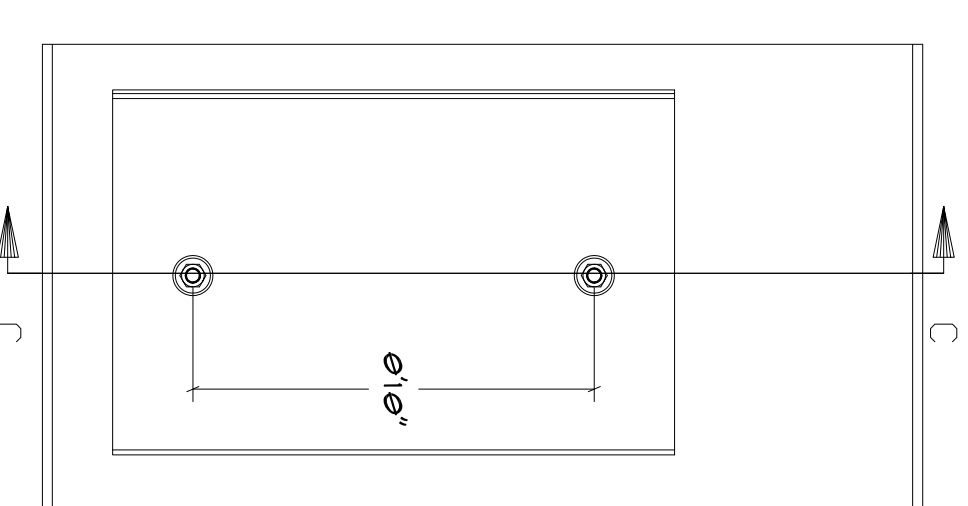
Section B-B



- NOTES:
1. DRILL HOLES THRU ALL PARTS IN PLACE
 2. DRILL 5/16" HOLE FOR 3/8" BOLT IN 4 PLCS
 3. FOLLOW FASTENER LAYOUT IN DETAIL A SECTION A-A



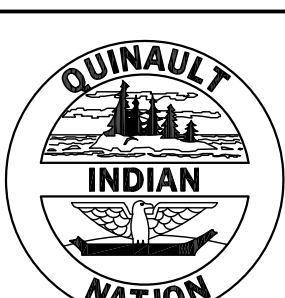
Section C-C



- NOTES:
1. DRILL HOLES THRU ALL PARTS IN PLACE
 2. DRILL 5/16" HOLE FOR 3/8 BOLT IN 4 PLCS
 3. FLANGE WOOD 2X6 SPACER TO FIT
 4. COUNTER SINK OUTSIDE 2X10 AS TO DEPTH OF 5/8" WITH 1" SPADE BIT.
 5. FOLLOW FASTENER LAYOUT IN DETAIL A SECTION A-A

FRAMING STEEL DETAIL

NOT TO SCALE



QUINALT ENGINEERING
 114 WEST QUINALT ST. LAKEWA, WA 98027
 PH (360) 274-8213 FAX (360) 295-1866
 WWW.QUINALTINDIANNATION.COM

PROJECT: **CARVING SHED**
 SCALE: NTS
 REVISION: A. 1

DESIGNED BY: **BJM**
 DATE: **8/16/2012**

SHEET CONTENTS:
FRAMING STEEL DETAIL

REVISION HISTORY:

CUSTOMER: **QUINALT INDIAN NATION**
 LOCATION: **TAHOLAH, WA**

A6.2
 OF 112