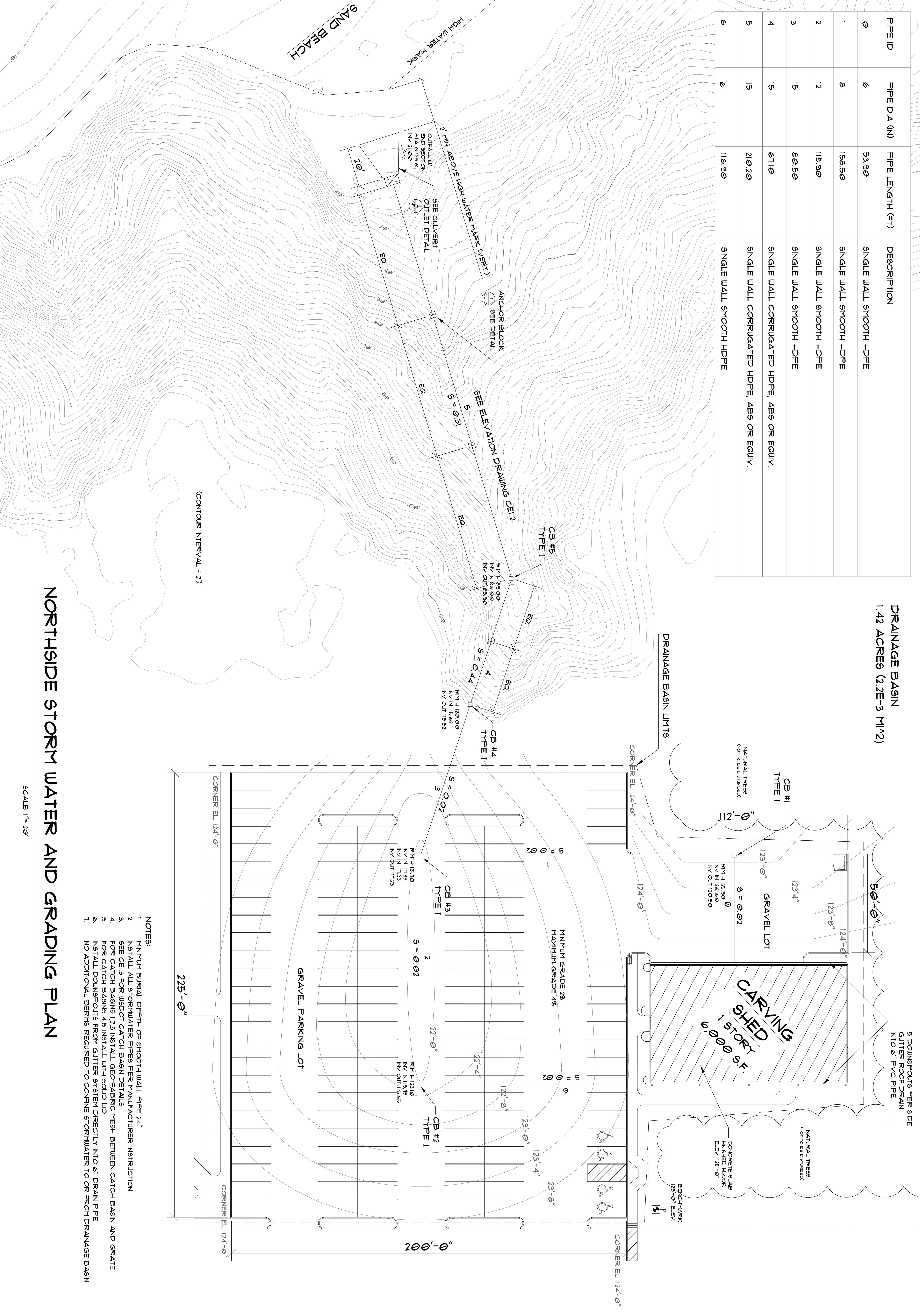


PIPE ID	PIPE DIA (IN)	PIPE LENGTH (FT)	DESCRIPTION
0	6	53.90	SINGLE WALL SMOOTH HDPE
1	8	158.50	SINGLE WALL SMOOTH HDPE
2	12	115.90	SINGLE WALL SMOOTH HDPE
3	15	80.50	SINGLE WALL SMOOTH HDPE
4	15	61.10	SINGLE WALL CORRUGATED HDPE, ABS OR EQUIV.
5	15	210.20	SINGLE WALL CORRUGATED HDPE, ABS OR EQUIV.
6	6	116.90	SINGLE WALL SMOOTH HDPE

**DRAINAGE BASIN**  
1.42 ACRES (2.2E-3 MI<sup>2</sup>)



- NOTES:**
1. MINIMUM BURIAL DEPTH OF SMOOTH WALL PIPE 24"
  2. INSTALL ALL STORMWATER PIPES PER MANUFACTURER INSTRUCTION
  3. SEE CEI.3 FOR USDOT CATCH BASIN DETAILS
  4. FOR CATCH BASINS 1,2,3 INSTALL GEO-FABRIC MESH BETWEEN CATCH BASIN AND GRATE
  5. FOR CATCH BASINS 4,5 INSTALL WITH SOLID LID
  6. INSTALL DOWNSPOUTS FROM GUTTER SYSTEM DIRECTLY INTO 6" DRAIN PIPE
  7. NO ADDITIONAL BERRMS REQUIRED TO CONFINE STORMWATER TO OR FROM DRAINAGE BASIN

**NORTHSIDE STORM WATER AND GRADING PLAN**

SCALE: 1" = 20'

<b>CE 1.1</b> OF CEA	CUSTOMER: QUINALT INDIAN NATION	REVISION HISTORY:	SHEET CONTENTS: <b>NORTHSIDE STORMWATER &amp; GRADING PLAN</b>	DESIGNED BY: BJM/NPW	PROJECT: <b>CAONE JOURNEY 2013 AND BEYOND</b>	<b>QUINALT ENGINEERING</b> <small>114 WEST GUNNELL ST. TACOMA, WA 98407          (253) 241-6115 (425) 390-1888          WWW.QUINALTENGINEERING.COM</small>
	LOCATION: TAHOLAH, WA			DATE: 8/24/2012	SCALE: 1/240	

